

# ELA

8

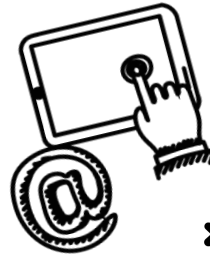
Ms. A. NGUYEN

Email: An.Nguyen1@sausdlearns.net

Phone: 714.558.5100 ext. 56540

Room: 110

E-mail is the fastest way to communicate with me!



## Daily Procedures:



1. Be in your seat when the bell rings. If you are tardy, you will sign your Tardy Card (w/ consequences).

3. Take out your Student Agenda & write down the homework right away.

2. View posted Agenda for the day & take out materials.

4. Complete the bell ringer/ "Do Now".

## Supplies:



- Binder w/ ELA section
- Composition Book
- Pencils
- Blue/black pens
- Highlighter
- Colored Pencils
- Lined paper
- Villa Agenda
- Chromebook + charger
- Earbuds/headphones
- Reading Book



## Google Classroom:

Enter your class code to be added to your Google Classroom page. Daily agendas, reminders, class work, & resources will be posted here. **It is imperative that you check GC every day.**



\*Other programs we will use to support your learning: MyAccess, Flip, No Red Ink, SORA, & more

## Grades:

- ❖ Homework (indep. reading)
- ❖ Classwork\*\*\*
- ❖ Quizzes/Tests
- ❖ Participation



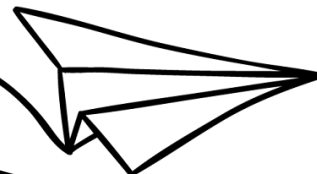
\*Students & parents should be checking Aeries weekly.  
\*6 grading periods (each is 6 weeks long).



## Restroom Privileges:

- Hold up a #1 to inform me that you must use the restroom. I will put your name on the board.
- When it's your turn, complete the In/Out Log & take the hall pass with you.
- No restroom use first ten and last ten minutes of class.
- Your cell phone should not be taken with you. Please leave your cell phone at the Charging Station.
- Maximum of 2 restroom visits per week.

## WICOR



### Writing

- \*Focused Note-taking
- \*Reflection
- \*Writing to learn & express your voice

### Inquiry

- \*Big Ideas/EOs
- \*Critical Thinking
- \*Investigating ourselves + the world

### Collaboration

- \*Team work
- \*Speaking & listening
- \*SEL/Community Building

### Organization

- \*Goal Setting
- \*Scheduling/ Time management
- \*Planning/Brainstorming

### Reading

- \*Close reading/ Annotations
- \*Vocab. Building
- \*Real life connections

